



GMT MONTHLY MEMBERSHIP PROGRESS REPORT

Results as of: 1/31/2017

Multiple District 411

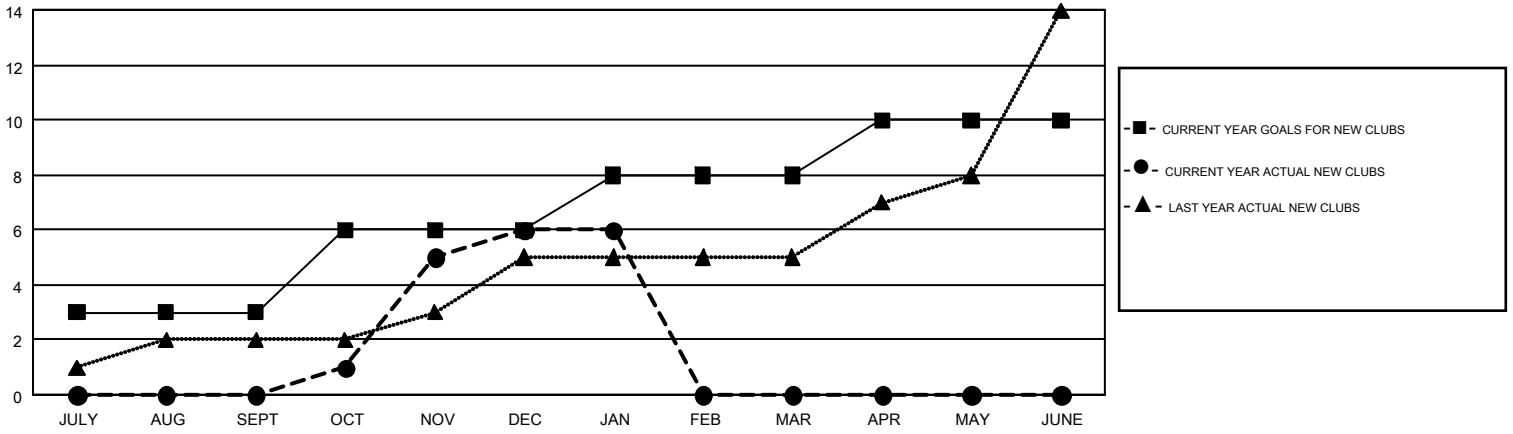
LOCATION: KENYA AFRICA

GMT: AMARPREET SEMBI

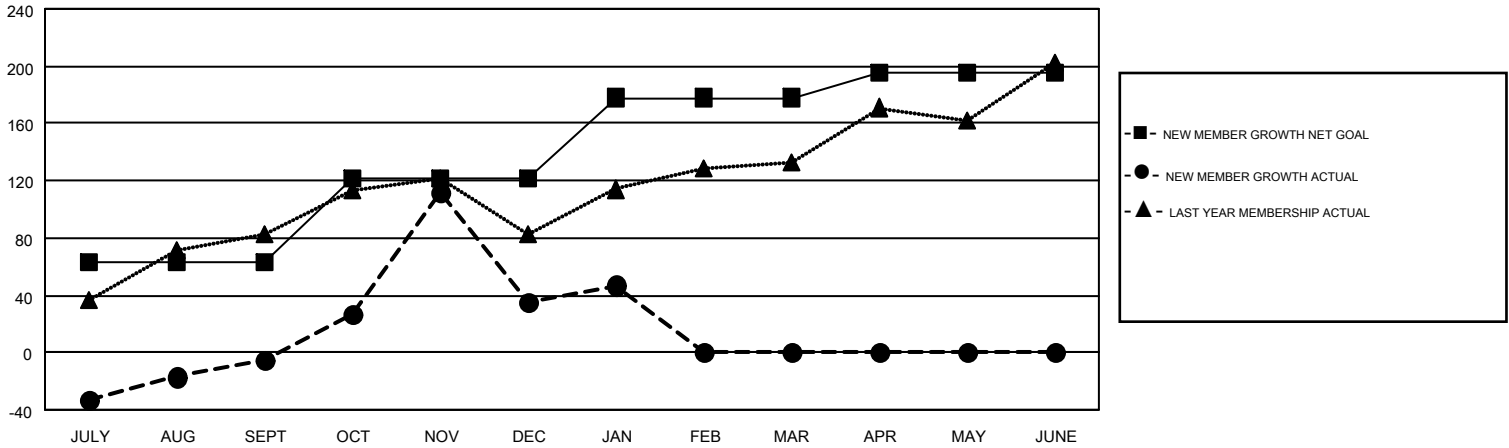
GMT CA 6-Afr

| Clubs | | | | Members | | | |
|-----------------------|---------------|-----------|---------------|-----------------------|--|--|--|
| RESULTS FOR 2016-2017 | | | | RESULTS FOR 2016-2017 | | | |
| QUARTER | NEW CLUB GOAL | NEW CLUBS | DROPPED CLUBS | QUARTER | NEW MEMBER GROWTH NET GOAL (not reinstated or transfers) | NEW MEMBER GROWTH ACTUAL (not reinstated or transfers) | DROPPED MEMBERS ACTUAL (including transfers) |
| JULY/AUG/SEPT | 3 | 0 | 1 | JULY/AUG/SEPT | 63 | 112 | 117 |
| OCT/NOV/DEC | 3 | 6 | 5 | OCT/NOV/DEC | 58 | 212 | 172 |
| JAN/FEB/MAR | 2 | 0 | 0 | JAN/FEB/MAR | 57 | 29 | 17 |
| APR/MAY/JUNE | 2 | 0 | 0 | APR/MAY/JUNE | 18 | 0 | 0 |

GOALS AND ACTUAL NEW CLUBS CUMULATIVE



GOALS AND ACTUAL MEMBERS CUMULATIVE



| | | | |
|------------------------|---|---|----------------|
| DROPPED CLUBS: 6 | 60 CLUBS OF 124 ADDED 1 OR MORE NEW MEMBERS | <u>GENDER DISTRIBUTION</u> | |
| | | MALE | 2,003 (66.24%) |
| | | FEMALE | 1,021 (33.76%) |
| <u>DROPPED MEMBERS</u> | | TOTAL FAMILY UNIT MEMBERS | 710 |
| DECEASED | 3 | FAMILY MEMBERS PAYING HALF DUES | 390 |
| CLUB CANCELLED | 99 | CLICK HERE FOR CUMULATIVE MEMBERSHIP DATA | |
| OTHER | 204 | | |
| TOTAL | 306 | | |